

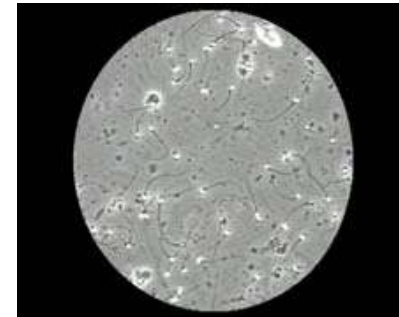


## Reproductive Science

### Andrology Scheme 2013-2014

**Enquiries to:**  
UK NEQAS Reproductive Science  
Scheme Administrator  
Andrology Laboratories,  
Old Saint Mary's Hospital,  
Oxford Road,  
Manchester,  
M13 9WL,  
United Kingdom.  
Tel: +44(0)161 276 6437/6456  
Fax: +44(0)161 276 6609  
Email: [repscience@ukneqas.org.uk](mailto:repscience@ukneqas.org.uk)

Web address:  
<http://www.cmft.nhs.uk/ukneqasrepsci.aspx>



## Clinical Value

External Quality Assessment (EQA) is:

- ◆ A fundamental procedure in the investigation of infertility.
- ◆ Used by clinicians to estimate the probability of conception and to monitor and advise on appropriate treatment.

## Quality

Erroneous results can lead to an incorrect diagnosis. Semen analysis needs to be accurate and precise.

Standardisation of protocols should minimise variation between laboratories. The latest edition of the WHO laboratory manual for the examination and processing of human semen is recommended.

## Quality Assessment

External quality assessment schemes help to assess performance and should be used in conjunction with internal quality control procedures.

### Motivation for External Quality Assessment

- ◆ Provides information on the relative performance of different methods
- ◆ Improves knowledge about the participants' ability to perform and report semen analysis
- ◆ Ensures that clinicians and patients have confidence in the service
- ◆ Responds to increasing pressure to demonstrate quality processes, for example:
  - Laboratories applying for accreditation by Clinical Pathology Accreditation (UK) Ltd. need to comply with standard H5.1, namely "There shall be participation in approved External Quality Assessment Schemes appropriate to the examinations and interpretations provided"
  - Laboratories working within the Human Fertilisation and Embryology Act (1990) need to comply with item 23.23 of the 8th Code of Practice, namely "The centre should where possible participate in inter-centre comparisons and inter-laboratory comparisons. The centre should evaluate the results of these comparisons and use relevant findings to improve its service"

2/4

## Distributions

Participants will receive four distributions per annum. If the distribution does not arrive on time or you cannot access the online modules it is essential that you inform us immediately.

Each distribution will consist of:

- 4 semen samples for Concentration and Morphology assessment.
  - 4 online Motility videos hosted by <http://gamete-expert.com> .
  - 24 online Morphology images hosted by <http://gamete-expert.com>
- Please submit results for ALL these components.**

The distributions will be sent out on:

**13 May 2013, 12 Aug 2013, 11 Nov 2013 and 10 Feb 2014**

Results should be entered online within four weeks.

### Results and reports service

Concentration and practical morphology results should be entered at <https://results.ukneqas.org.uk> .

Online motility and morphology results should be entered at <http://gamete-expert.com> .

All new participants will be provided with instructions and passwords. Reports will be available within one month of the distribution closing date at: <https://results.ukneqas.org.uk>

### The Scheme year runs April - March fees 2013-2014

Semen Analysis (including online modules)	£490.00
Overseas postage and packaging fee	£65.00

Laboratories may purchase additional licences for a nominal fee (see enrolment form) for internal quality control and training purposes. Licensed individuals who are members of ACE or IBMS can claim points for continued professional development on submission of results. All fees will be automatically charged V.A.T unless you are from UK NHS (England) or provide a copy of a valid exemption certificate.

### Participants' Meeting

We have an Annual Participants' Meeting to be held in March 2014. A nominal charge is made for this meeting. Details will be forwarded to all scheme members.

3/4